



# Installation Manual

## InNovaSound

### Package Contents:

1. **USB** Scanning Probe(s) that was placed with your order.
2. **USB** Memory Stick containing preloaded software, User Manual, and Installation manual.

\*\*\* **Note: Please do not Plug in the Ultrasound Probes until the Software has been installed** \*\*\*

### Installation:

1. Unpack your new **InNovaSound** System. (**fig. 1**)
2. Turn on your Laptop/ Desktop computer. Once your computer system is ready for usage, located the memory stick that the **INNOVASOUND** Software is supplied on. (**fig. 2**)
3. Install the memory stick in to one of your **USB2** (**fig's. 3 & 4**) ports the following **2** files will be displayed once you have opened the Removable Disk.



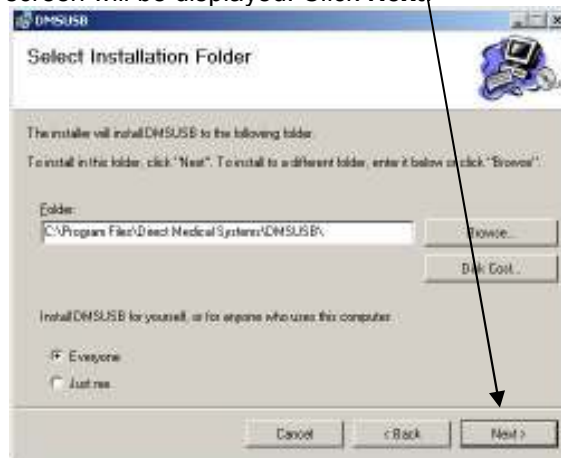
4. Click on the icon “**DMSUSB\_Setup 1075.exe**”



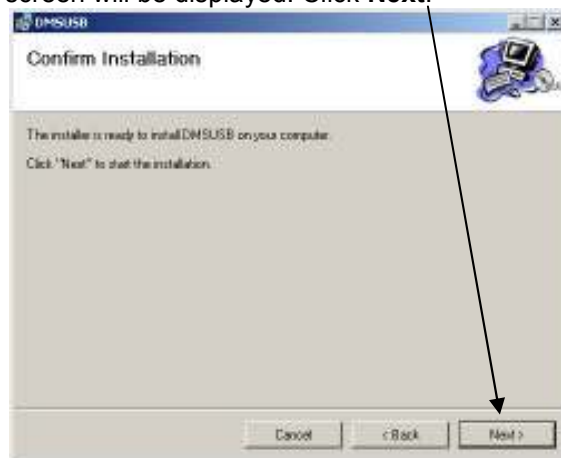
5. The following screen will be displayed. Click **Next**:



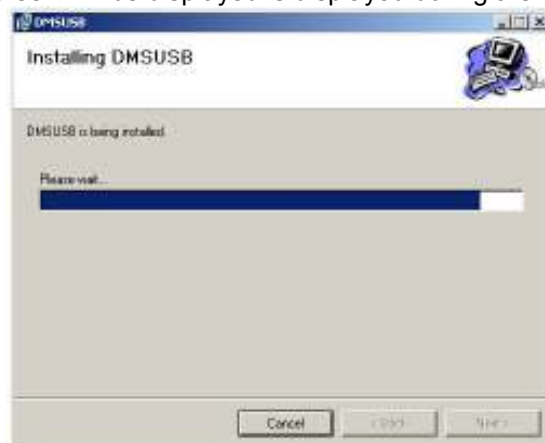
6. The following screen will be displayed. Click **Next**:



7. The following screen will be displayed. Click **Next**:



8. The following screen will be displayed is displayed during the installation.



9. The following screen will be displayed. Click **Close**:



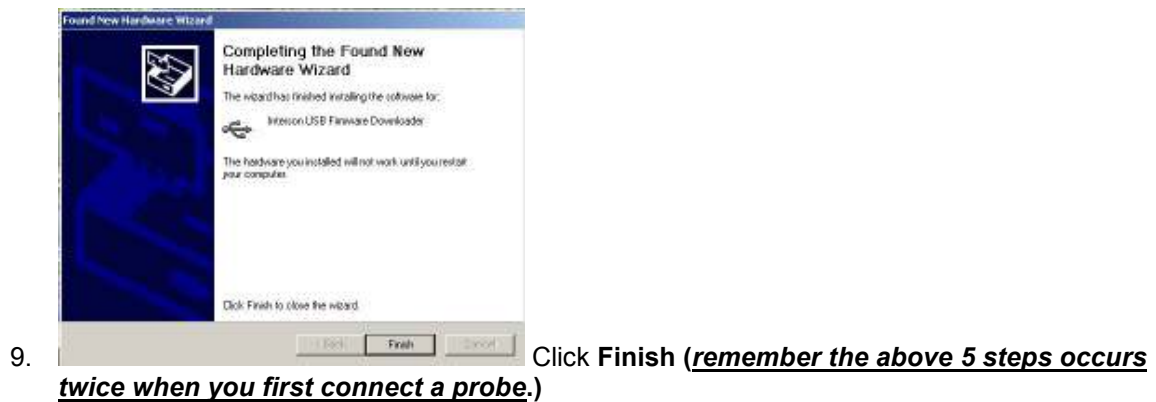
10. The software is now installed.  
11. Remove the memory stick and save it in a safe place.

### USB Probe Installation:

1. Connect the **PUPPS** Ultrasound probe to one of your **USB2** ports (**fig. 5**).
2. Windows XP and Vista will display "**FOUND NEW HARDWARE**" message when the probe is inserted. This process will occur twice because of the hardware being installed requires that Windows XP and Vista finds two (**2**) **USB2** devices within our product and is normal operation. Once this installation process has finished **twice** your system is ready to use.
3. The complete process is shown here in detail and this will repeat a second time.

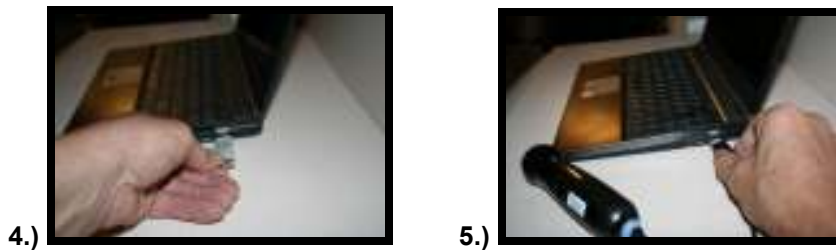


Click **Next**



## System Operational Software:

1. **Double click** the new icon on your desktop called **Shortcut to DMSUSB.exe** (fig.6)
2. The **InNovaSound** software will load and start running on your system. (fig. 7)



Thank you for investing in the PUPS (Pocket Ultrasound Probe System)

If you need any assistance please call Direct Medical System – Technical Engineering Support  
Toll Free (888) 600-8666 option 1 – within the USA  
Worldwide (925) 600-8463 – option 1